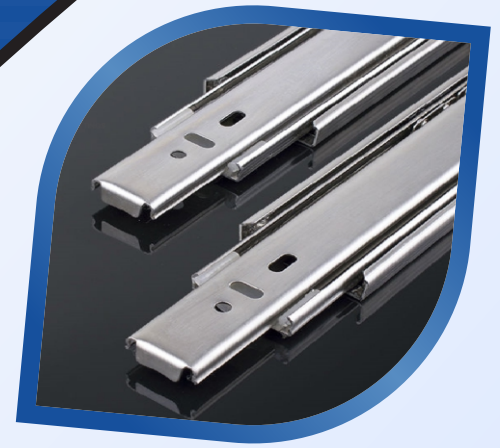


Where strength meets styles...



AN ISO 9001:2015 CERTIFIED COMPANY



Complete
**Glass, Wooden &
Kitchen hardware
solutions**

www.btxhardware.co.in

We Support:



BTX[®]

HARDWARE



COMPANY PROFILE

About Us : Advanced Technologies (India) is a manufacturer of architectural hardware and glass fittings Under the Brand name of BTX, which provides complete solution to residential and commercial structures. Nearly five years of a strong, customer-focused approach and continuous quest for world-class quality have enabled us to sustain leadership. Advanced Technologies (India) has an national presence with a thrust on Global Supply Chain and distribution footprint. Our products and solutions are supported by a wide network of dealers and distributors, which have helped establish a reputation for strong customer support. We believe that progress must be achieved in harmony with the socio-environment, wherein following green manufacturing practices is an integral part of its corporate vision.

Setting on a strong foundation since its inception, and guided by its customer-centric philosophy, the company leverages the power of complete architectural hardware solutions to enable infrastructure development partners to enrich with superior returns on their projects. With a mission to expand our global market outreach, Advanced Technologies strives to collaborate with its clients to provide comprehensive hardware solutions for residences and businesses.

Since our inception, we function with our testing and R&D facility centre, as a result, setting industry benchmarks in hardware fittings and solutions. We are committed to partnering with its stakeholders for providing end-to-end architectural hardware products to the Architects, Builders, Fabricators, Interior Decorators, Corporate Houses, Government Contractors, and many others in the domain of residential and commercial projects. Advanced Technologies has emerged as an influential force in the continuing advancement of architectural hardware industry and has served for many popular projects, both domestic and international.



UNIT-1



UNIT-2



UNIT-3

VOCAL FOR LOCAL



PRODUCT SERIES	PAGE NO.	PRODUCT SERIES	PAGE NO.
TELESCOPIC CHANNELS	3	TALL UNIT	19
DOOR CLOSERS	4	UTILITY DRAWER PULL OUT	19
HYDRAULIC HINGES	5-6	DISH RACK	20
WARDROBE SLIDING TRACKS	7	S CORNER (L/R)	20
WOODDEN DOOR SLIDING TRACKS	7	MAGIC CORNER (L/R)	21
WARDROBE SLIDING SET	8	PULL DOWN SYSTEM - SS	21
SLIDING TRACKS	8	ALUMINIUM ROLLING SHUTTER	22
LOCKS	9	DOOR WASTEBIN	22
CUP & SOUCER HOLDER	10	WARDROBE LIFTUP	23
THALI HOLDER	10	TROUSER RACK	23
SMART DIGITAL MAIN DOOR MORTISE LOCK	10	JEWELLERY BOX	24
KITCHEN PVC LEGS	10	DRAWER HANDLES	24
CUTLERY TRAY	11	ADJUSTABLE SPINDLE FLOOR SPRING	25
TANDOM BOX DRAWER SLIDE	12	NON DIGGING NEW FLOOR HINGE	25
UNDER MOUNT SOFT CLOSE SLIDERS	12	PATCH FITTINGS	26-27
SOFA LEGS	13	GLASS DOOR HANDLES	28-30
GAS SPRINGS	14	GLASS DOOR LOCKS	31-32
BED LIFTERS	14	SLIDING DOOR ROLLERS	33
KITCHEN & WARDROBE PROFILE	15	GLASS CLAMPS	34
FOLDING FURNITURE	16	SHOWER HINGES	35
CASTOR WHEELS	17	GLASS HEADERS	36
KITCHEN CABINET STAY	17	BLUSTER RAILING	36
WICKER/MULTIPURPOSE BASKET	18	GLASS SLIDING TRACKS	36
MOTORIZED CLOTHES DRYING RACK	18	GLASS SEALING PROFILE	37-38
MAGNET DOOR STOPPERS	18		
SHOE RACK	18		

TELESCOPIC CHANNELS

BTC-501

*Soft Close Telescopic Channel
All Sizes From 12" To 24" Available
Zinc & Black Finish Available*



15 SET

BTC-502

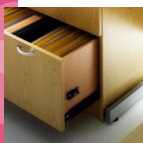
*Push Open Telescopic Channel
All Sizes From 12" To 24" Available*



15 SET

BTC-503

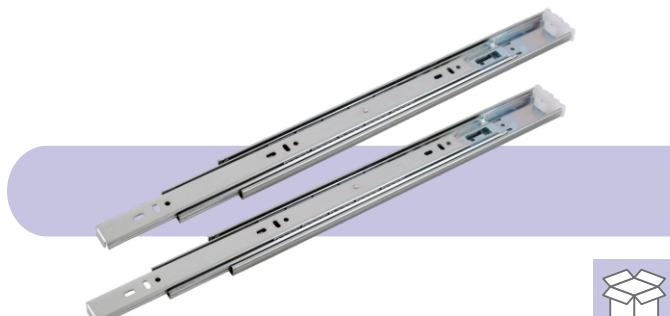
*Heavy Duty Telescopic Channel
All Sizes From 8" To 30" Available
72-74 gms/inch*



15 SET

BTC-504

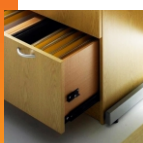
*Normal Telescopic Channel
All Sizes From 10" To 20"
Zinc Finish Available
60-65gms/inch*



15 SET

BTC-505

*Normal Telescopic Channel
All Sizes From 10" To 20"
70-72gms/inch*



15 SET

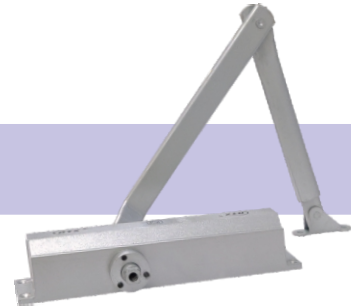
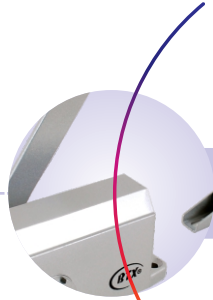
DOOR CLOSERS

BDC-071

Capacity Upto 65kgs.



10 PCS.

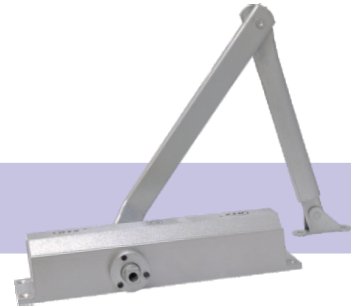
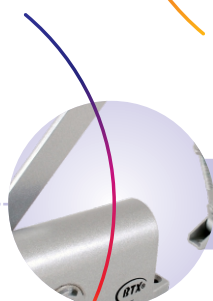


BDC-070

*Capacity Upto 65kgs.
90° Auto Hold*



10 PCS.

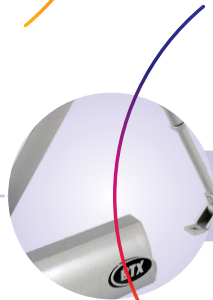


BDC-073

Capacity Upto 80-100kgs.



10 PCS.

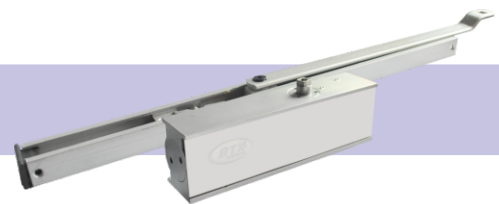


BDC-074

*PALMET ARM DOOR CLOSER
Capacity Upto 80-100kgs.
90° Auto Hold*



10 PCS.

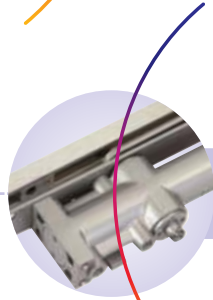


BDC-075

*CONCEALED DOOR CLOSER
Capacity Upto 80-100kgs.
Min. Door Width 38mm.*



10 PCS.



HYDRAULIC HINGES

BEC-101

Soft Close, Clip-on Hydraulic Hinge (0°, 8° & 15°)

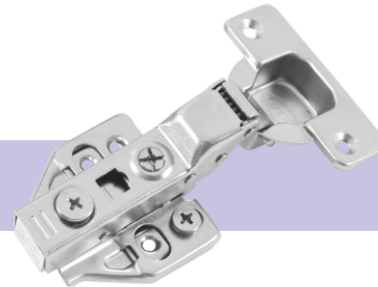


100 SET



BEC-102

3D-Soft Close, Clip-on Hydraulic Hinge (0°, 8° & 15°)

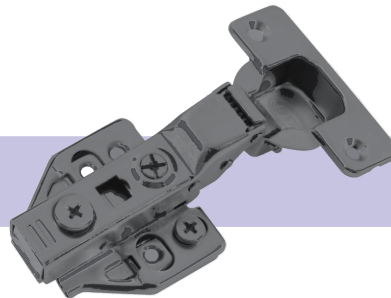
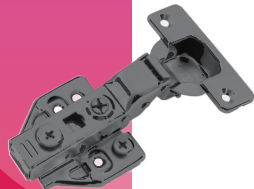


100 SET



BEC-102-B

Black Finish 3D-Soft Close, Clip-on Hydraulic Hinge (0°, 8° & 15°)



100 SET



BEC-103

Soft Close, Clip-on Stainless Steel (SS) Hydraulic Hinge (0°, 8° & 15°)

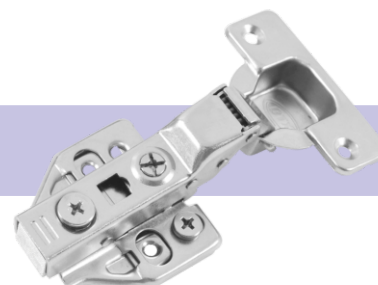


100 SET



BEC-108

*3D-Soft Close, Clip-on Hydraulic Stainless Steel Hinge (0°, 8° & 15°)
Stainless Steel (SS)*



100 SET



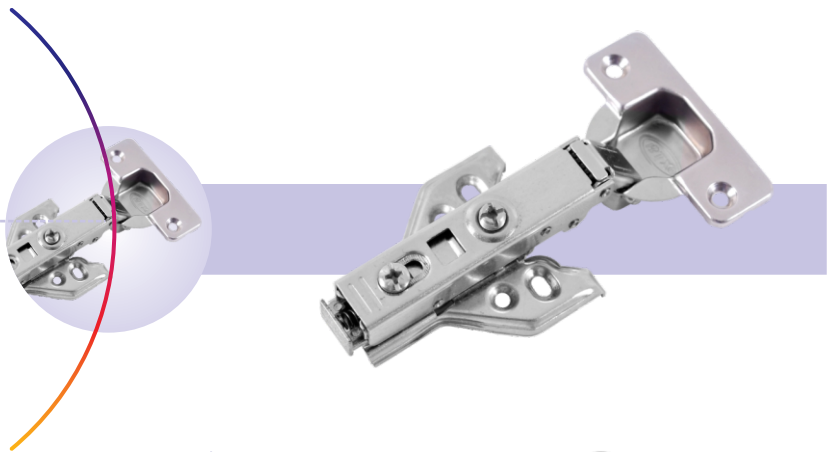
HYDRAULIC HINGES

BEC-104

Soft Close, Wing Type Clip-on Hydraulic Hinge (0°, 8° & 15°)



100 SET

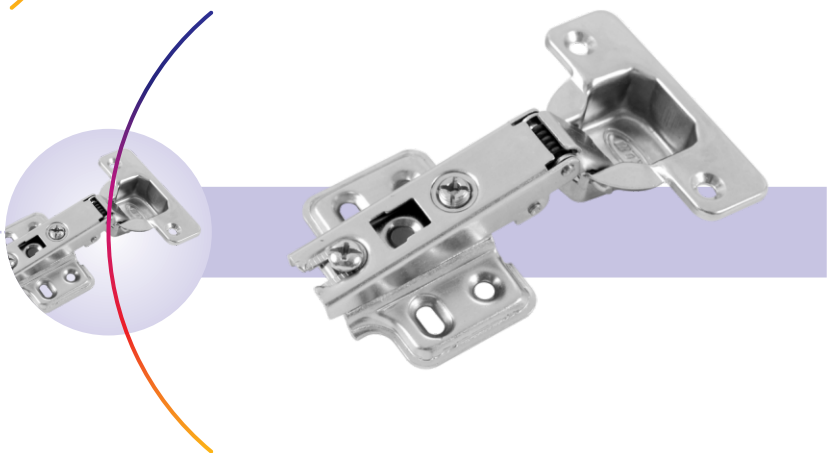


BEC-105

Normal Type Hinge (0°, 8° & 15°)



100 SET

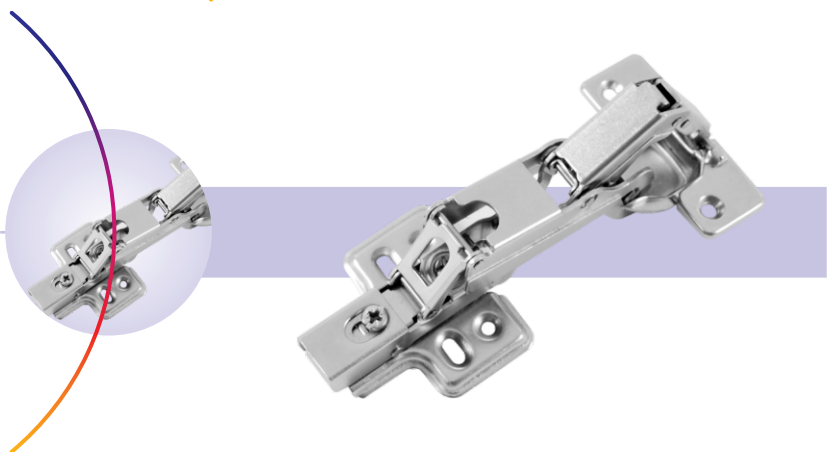


BEC-106

Corner Hinge Soft Close, Clip-on Hydraulic Hinge



100 SET

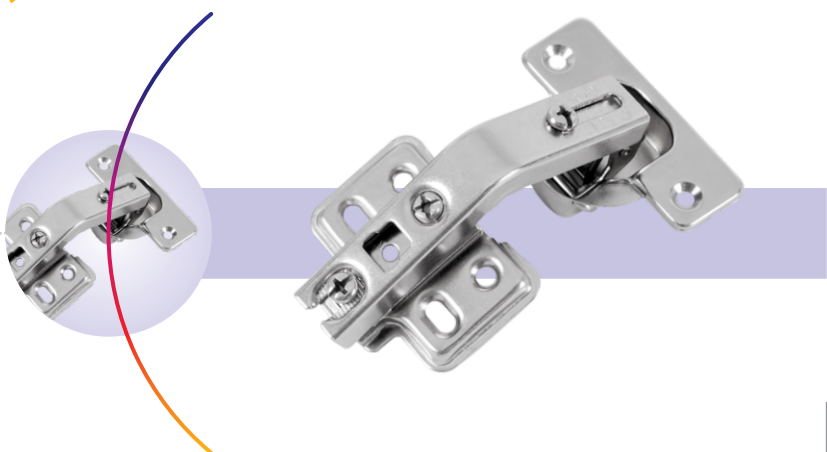


BEC-107

Pie Hinge Soft Close, Clip-on Hydraulic Hinge



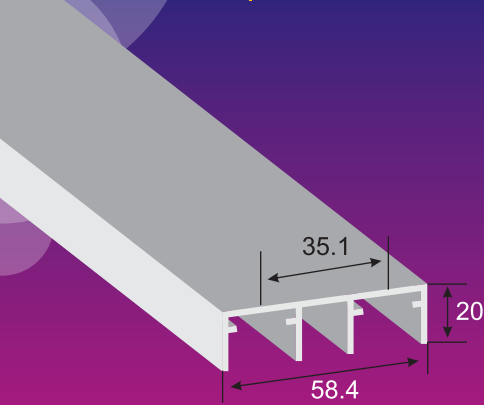
100 SET



WARDROBE SLIDING SET

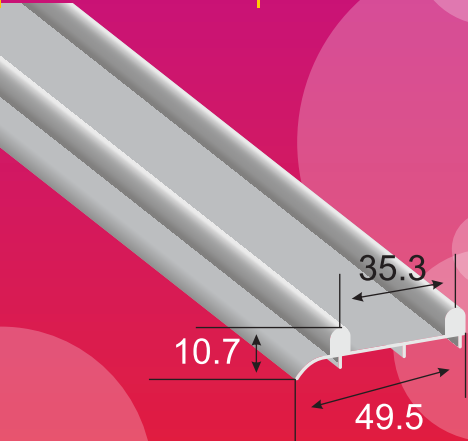
SLIDING TRACKS

BPL-101



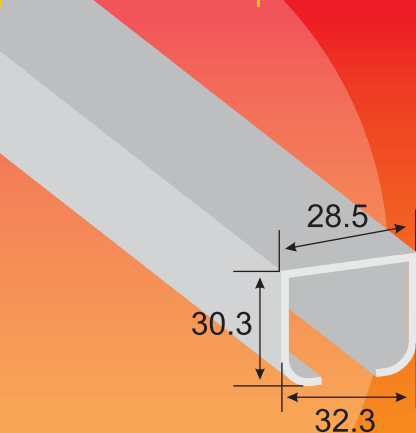
10 PCS *Wardrobe sliding track*
2.4 Metre & 4 Metre

BPL-102



20 PCS *Wardrobe sliding track*
2.4 Metre & 4 Metre

BPL-103



10 PCS *Wooden door sliding track*
3 Metre & 4 Metre

SLIDING TRACKS

BDR-101



50 SET

Wardrobe sliding set

Soft Close Wardrobe

Weight Capacity: 30-40 Kg.

BDR-102

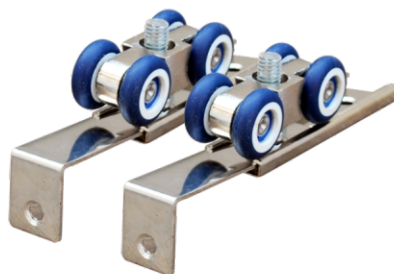


40 SET

Soft close Wardrobe sliding set

BDR-103

Door Weight Capacity: 40 Kg.

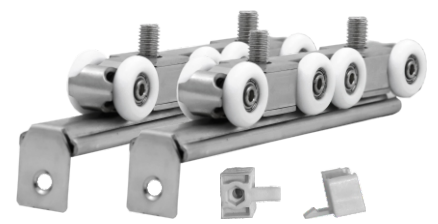


40 SET

4 Wheel wooden door sliding set

BDR-104

Door Weight Capacity: 80 Kg.



40 SET

8 Wheel wooden door sliding set

WARDROBE SLIDING SET

BDR-105



Soft Close Wardrobe
Weight Capacity: 40-50 Kg.



30 SETS / 15 BOXES

*Wardrobe soft close slide set
Long Damper 4 Pcs + 8 Pcs Roller*

BDR-106

Soft Close Door
Weight Capacity: upto 80 Kgs.



10 SET

Wooden door 8 wheel soft close sliding set

BDR-107

Soft Close Wardrobe
Weight Capacity: upto 70 Kgs.



20 SETS / 10 BOXES

*Heavy Duty Wardrobe Soft Close
Sliding Set wheel soft close sliding set*

BPL-104S



10 SET _____ 2.4 Metre & 4 Metre

BPL-104D



10 SET _____ 3 Metre & 4 Metre

BPL-105



10 SET _____ 2.4 Metre & 3.65 Metre

BPL-106



10 SET _____ 2.4 Metre & 4 Metre

SLIDING TRACKS

SLIDING TRACKS

designer hardware...

BTX®

HARDWARE

designer hardware...

LOCKS

product code
BFL-001

 30 PCS.



*Bathroom door bulblock
copper core & copper key
One side key one side knob
201 SS body cover
Silver & Antique Finish*

product code
BFL-002

Antique Lock



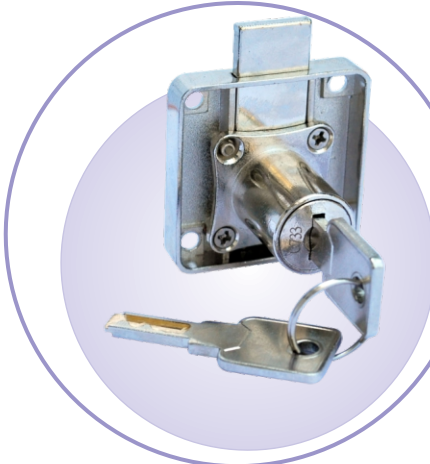
product code
BLL-001

Night latch lock



 16 PCS.

product code **BDL-201**



12Pcs. X 20Box = 240Pcs.

product code **BDL-202**



12Pcs. X 20Box = 240Pcs.

product code **BDL-203**



12Pcs. X 20Box = 240Pcs.

product code **BDL-204**



12Pcs. X 20Box = 240Pcs.

LOCKS

WWW.BTXHARDWARE.CO.IN

CUP & SOUCER HOLDER

THALI HOLDER

*Cup & Soucer Holder
Stainless Steel 201*

*Available in 20" & 22"
With Polymer Coated*

BCS-001 20"
BCS-002 22"
SOUCER HOLDER



BTH-001 20"
BTH-002 22"
THALI HOLDER



KITCHEN PVC LEGS

BKA-PL 001
ADJUSTABLE
PVC LEGS



BML-001
SILVER



**SMART DIGITAL
MAIN DOOR
MORTISE
LOCK FOR
WOODEN DOOR
WITH
ADVANCED
FEATURES.**



BML-001
BRONZE



BML-003
BLACK

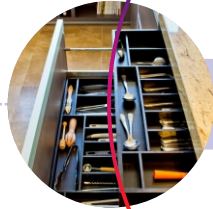
*Unlock Methods 1 Key Unlock 2. Remote Unlock 3. Finger Print
4. Password Unlock 5. Swipe Unlock 6. E- Key Unlock*



CUTLERY TRAYS

product code
BCT-101

Cutlery tray
Cabinet Width 600mm.
Material : ABS



product code
BCT-102

Cutlery tray
Cabinet Width 700mm
Material : ABS



product code
BCT-103

Cutlery tray
Cabinet Width 800mm
Material : ABS



product code
BCT-104

Cutlery tray
Cabinet Width 900mm
Material : ABS



MODULAR KITCHEN - TANDOM BOX

BTB-401 | BTB-402

4" | 6"

Length 20"

Sleak tandom box

BTB-403

8"



6 SET

BTB-601 | BTB-602

4" | 6"

Length 18"

Sleak tandom box

BTB-603

8"



6 SET

BTB-701 | BTB-702

4" | 6"

Length 22"

Sleak tandom box

BTB-703

8"



6 SET

BTB-501 | BTB-502

4" | 6"

SQUARE GALLERY TANDOM BOX

Length : 20"

Square gallery tandom box.

BTB-503

8"



6 SET

BSU-101 | BSU-102,

18" | 20"

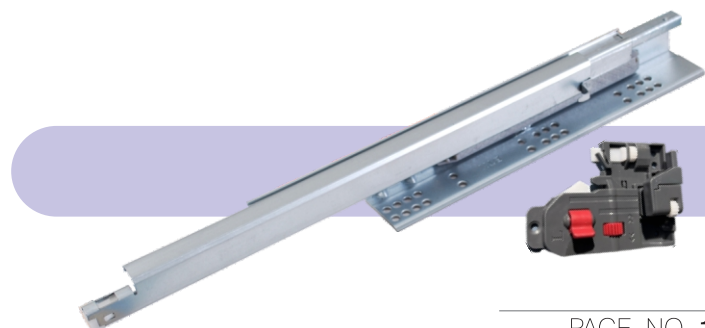
BSU-103, BSU-104, BSU-105

12" | 14" | 16"

Under Mount Soft Close Sliders



10 SET



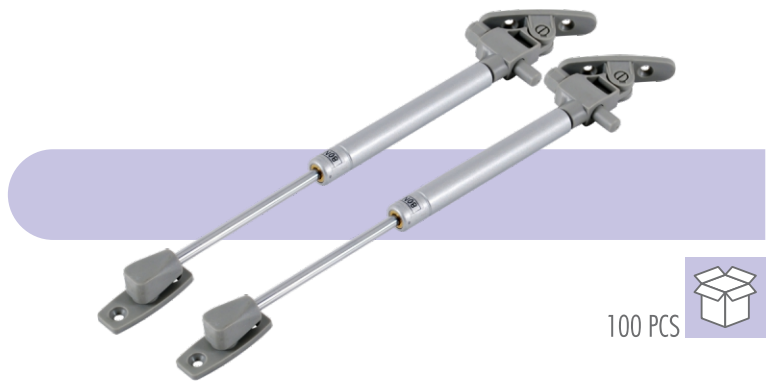
SOFA LEGS

 <p> 20 SET BSL-101</p> <p><i>One Pc. Alloy Steel Sofa Leg Height: 8cm.</i></p>	 <p> 20 SET BSL-102</p> <p><i>One Pc. Alloy Steel Sofa Leg Height: 4.5cm.</i></p>	 <p> 12 SET BSL-103</p> <p><i>Colour: Gold Aluminium Magnesium Alloy Height: 8cm Height adjustable upto 1"</i></p>	 <p> 12 SET BSL-104</p> <p><i>Colour: Red Bronze Aluminium Magnesium Alloy Height: 8cm Height adjustable upto 1"</i></p>
 <p> 12 SET BSL-105</p> <p><i>Colour: Silver Sand Aluminium Magnesium Alloy Height: 8cm Height adjustable upto 1"</i></p>	 <p> 12 SET BSL-106</p> <p><i>Colour: Silver Sand Aluminium Magnesium Alloy Height: 8cm Height adjustable upto 1"</i></p>	 <p> 12 SET BSL-107</p> <p><i>Colour: Red Bronze Aluminium Magnesium Alloy Height: 8cm Height adjustable upto 1"</i></p>	 <p> 12 SET BSL-108</p> <p><i>Colour: Silver Sand Aluminium Magnesium Alloy Height: 8cm Height adjustable upto 1"</i></p>
 <p> 12 SET BSL-109</p> <p><i>Colour: Silver Sand Aluminium Magnesium Alloy Height: 8cm Height adjustable upto 1"</i></p>	 <p> 12 SET BSL-110</p> <p><i>Colour: Red Bronze Aluminium Magnesium Alloy Height: 8cm Height adjustable upto 1"</i></p>	 <p> 08 SET BSL-111</p> <p><i>Colour: Silver Sand Height: 7cm.</i></p>	 <p> 10 SET BSL-112</p> <p><i>Colour: Mirror Finish Height: 7cm.</i></p>

GAS SPRINGS

BGS-161

Soft close gas spring
50 N, 100 N, 150 N, 200N

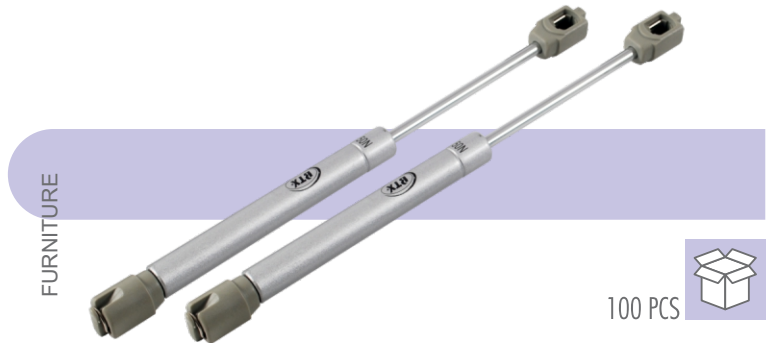


100 PCS 

- BGS-301 50N
- BGS-302 100N
- BGS-303 150N
- BGS-304 200N

- BGS-305 250N
- BGS-306 300N
- BGS-307 350N

Gas spring

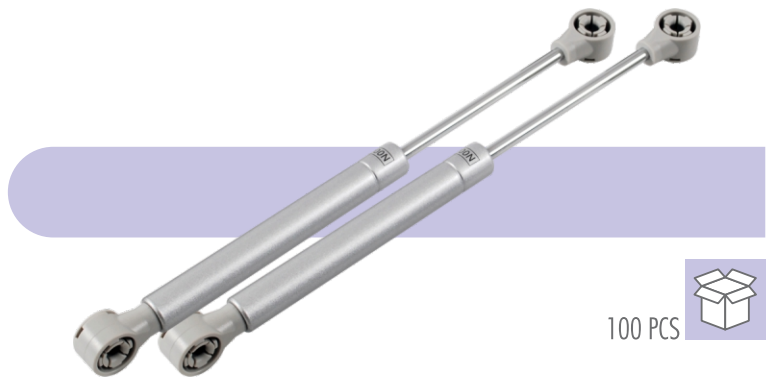


FURNITURE

100 PCS 

BGS-613

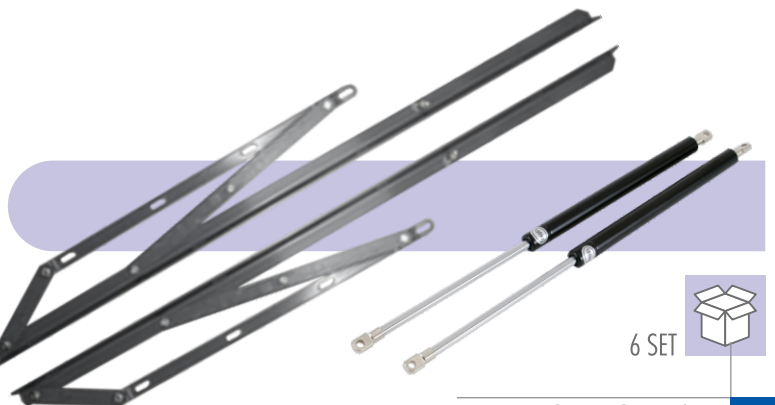
Clip on gas spring
50N, 100N, 150N



100 PCS 

BBL-001

Bed lifter heavy bed holder
i) 3 ft. - 3mm - 750N-1000N
ii) 5 ft. - 3.5mm - 750N, 1000N
1200N, 1500N
iii) 5ft. - 5mm - 750N, 1000N,
1200N, 1500N, 1750N, 2000N,
2500N



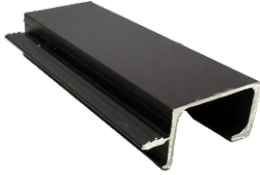
6 SET 

GAS SPRINGS

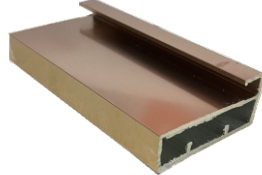
BED LIFTERS

KITCHEN & WARDROBE PROFILE

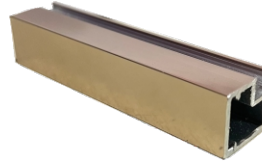
product code
BAP-IP-GP-01 TO 07
TYPE G PROFILE



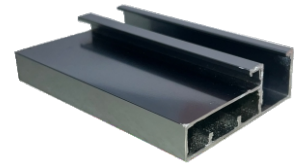
product code
BAP-IP-FP-01 TO 07
SLIM FRAME PROFILE
WIDTH-45 MM



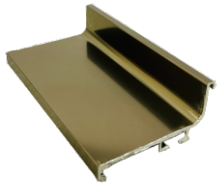
product code
BAP-IP-NFP-01 TO 07
SLIM FRAME PROFILE
WIDTH-22 MM



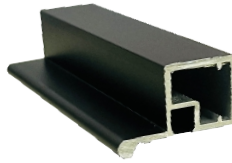
product code
BAP-IP-HP-01 TO 07
SLIM HANDLE PROFILE
WIDTH-65 MM



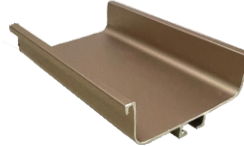
product code
BAP-IP-GL-01 TO 07
GOLA L PROFILE



product code
BAP-IP-NHP-01 TO 07
SLIM HANDLE PROFILE
WIDTH-32 MM



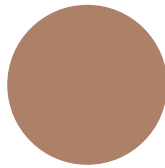
product code
BAP-IP-GC-01 TO 07
GOLA C PROFILE



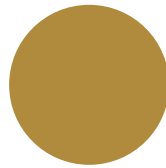
product code
BAP-IP-GLC
CONNECTER
GOLA L/GOLA C



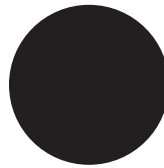
CP FINISH



Rose Gold



Golden Brush

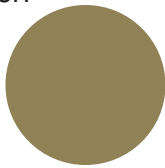


Black

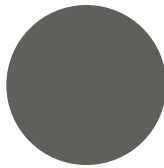
product code
BAP-GLC
CONNECTOR



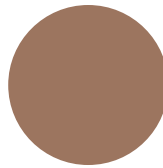
product code
BAP-FHP
CONNECTOR
Frame Handle Profile



Light Champagne
Glossy



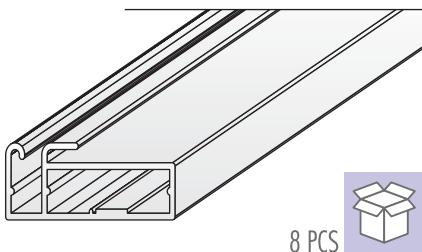
IRON GREY



ROSE GOLD
MATT

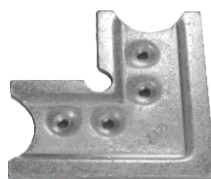
NOTE:- ALL PROFILE AVAILABLE IN ALL SHADES

product code
BAP-002



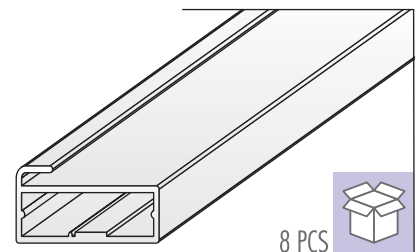
Handle Profile with Profile handle

product code
BAP-001



Profile Connector

product code
BAP-003



Frame Profile W/o. Handle

FOLDING FURNITURE

BFT-001 | 700 MM 900 MM

BFT-001- 700mm / 900 mm
For Folding Furniture



700 mm Table / 700 mm Table

product size

Length-22"
Width-700mm
Capacity-70kg

product size

Length-22"
Width-900mm
Capacity-70kg



Invisible Drawer Pullout table Rail



Invisible Cabinet Pullout table Rail

BFT-002 | 900 MM

BFT-002- 600mm to 900 mm adjustable
For Folding Furniture

product size

Length-22"
Width-(600mm to 900mm)
(adjustable)
Capacity-40kg



600mm to 900 mm adjustable

BFT-003 | 650 MM 750 MM

BFT-003- 650mm / 750 mm
For Folding Furniture



Table Top 600x1200mm

product size

Length Closed -650 Mm
Length Extended-1300mm
Width 800-1200 Adjustable
Capacity-30kg

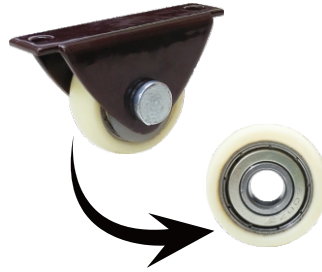


Kitchen Island table

Castor Wheel

- ✓ Caster wheel with bearing
- ✓ High load bearing capacity
- ✓ Bearing coated with high quality polymer for long life & smooth working

BCW-001
Single Wheel



BCW-002
Six Wheel



BCW-003 ▶
Revolving Castor Wheel



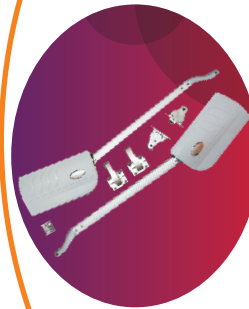
KITCHEN CABINET STAY

BUS-501 | 6 to 7 Kg

BUS-502 | 8 to 9 Kg

Finish Grey
Item Code BUS-501
Capacity 6 to 7 Kg

Finish Grey
Item Code BUS-502
Capacity 8 to 9 Kg



WICKER / MULTIPURPOSE BASKET

- BWB-001** | 450 MM
- BWB-002** | 600 MM

Natural Cane Wood

Sizes : 450 mm
600 mm

Item Code : BWB 001
BWB 002



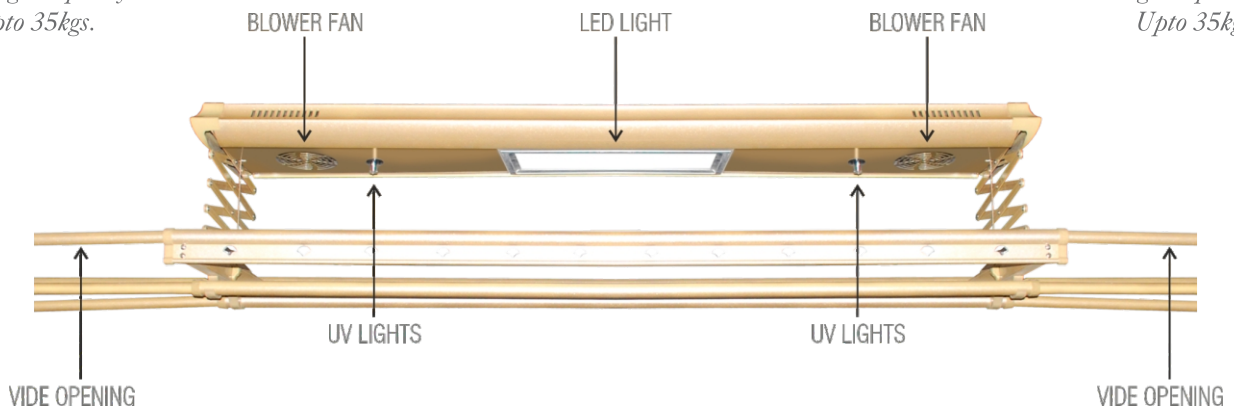
MOTORISED CLOTHES DRYING RACK

BCD-201

*Golden finish
Weight capacity
Upto 35kgs.*

BCD-201

*Silver finish
Weight capacity
Upto 35kgs.*



MAGNET DOOR STOPPERS

SHOE RACK



BELL TYPE (Antique) BELL TYPE NORMAL

Silver And Antique Finish Available



BSR-601-8 layers, BSR-602-10 layers

product code
BSR-601/602

PENTRY UNIT

BKA-001

- ✓ Fashion gen, with smooth close system.
- ✓ Unique anti-slip base.
- ✓ Max. 5 Kg. for big basket, 3 Kgs. for small basket.
- ✓ Height adjustable
- ✓ Material: Stainless Steel Grade 304

Cabinet Width : 450, 600mm
Finish : White



BKA-002

- ✓ Baskets can be brought out when pulling door.
- ✓ Stability in design, operations easy.
- ✓ 150mm (2 Layer)
- ✓ 200mm (2 Layer)
- ✓ 250mm (2 Layer)
- ✓ 300mm (3 Layer)
- ✓ Material: Stainless Steel SS 304

Cabinet Width : 150, 200, 250, 300mm
Finish : Grey

UTILITY DRAWER PULL OUT



DISH RACK

BKA-003

Material: Stainless Steel Grade 304

Cabinet Width : 600, 700, 800, 900, 1000mm

Finish : White

Material : Stainless Steel



BKA-004

- ✓ *Max. 10Kg. for easy swing tray.*
- ✓ *Suitable for corner cabinets.*
- ✓ *Unique anti-slip base.*
- ✓ *Soft close motion.*
- ✓ *Fashion generous with smooth close system*
- ✓ *2 layer-900mm flat line-white.*

Finish : White / Black

Material : BKA-004-L : BKA-004-R

S CORNER (L/R)



BTX®

H A R D W A R E

designer hardware...

UNIVERSAL MAGIC CORNER

BKA-005

- ✓ Soft close with easy use kitchen system.
- ✓ Max. 6 Kgs. for big basket, 5Kgs. for small basket.
- ✓ Anti-slip base.
- ✓ 2 layers 900-1000mm.
- ✓ Material: Stainless Steel SS 304.

Finish : White : Black
Code : BKA-005-L/R : BKA-005-UNV



BKA-009

- ✓ Material: Stainless Steel Grade 304

Cabinet Size : 600,-900mm
Finish : Silver SS

PULL DOWN SYSTEM-SS



ALUMINIUM ROLLING SHUTTER

BKA-007

- ✓ *High quality materials, functional.*
- ✓ *Easy installation, beautiful appearance.*
- ✓ *Easy to use, Optimal Utilization.*
- ✓ *Material real aluminium*
- ✓ *Cabinet with optional width from 450, 600, 900mm*

Cabinet Width : 600mm
Finish : Aluminium & Brush



BDW-001

Capacity : 14 Liters

DOOR WASTEBIN



BTX®

H A R D W A R E

designer hardware...

WARDROBE LIFTUP

BWA-001

- ✓ Adjustable from 830 to 1150mm.
- ✓ Grey finish.

Cabinet Size : 900mm



BWA-002

- ✓ Soft close feature.
- ✓ Organization trouser/sarees conveniently & easy accessories.
- ✓ Cabinet width 900mm.

Cabinet Size : 900mm

TROUSER RACK



JEWELLERY BOX

BWA-003

Cabinet width 900mm.
Velvet finish.

Cabinet Width : 900mm



DRAWER HANDLES

product code
BPL-201(S)400
SILVER

product code
BPL-201(S)500
SILVER

product code
BPL-201(C)400
CHAMPAGNE

Available in silver & champagne

product code
BPL-201(C)500
CHAMPAGNE



10 PCS



10 PCS

BFS-500

BFS-500 attachment
For wooden & aluminium doors.

TELESCOPIC CHANNELS



Available in Matte & Glossy Finish



product size

Cement Box Size: 310x110x42mm, Cover Size: 320x130mm
Front and Back Adjust 5mm, Material: Stainless Steel SS 304.

performance specification

Capacity: 130kg/100kg., Door Width: 1300mm/1000mm
Maximum Closing Time 46s, Minimum Closing Time 3s
Max Open Degree 105 or 125, 90 HO or NHO
Two Section Speed Valve, Closing Speed 90-25
Latching Speed 25-0



Available in Matte & Glossy Finish



FLOOR SPRINGS

ADJUSTABLE SPINDLE FLOOR SPRING Single Cylinder Floor Spring Machine

product size

Cement Box Size: 250x100x47mm, Cover Size: 268x123mm
Front and Back Adjust 5mm, Material: Stainless Steel SS 304.

performance specification

Capacity: 60kg/80kg., Door Width: 1000mm
Maximum Closing Time 46s, Minimum Closing Time 3s
Max Open Degree 105, 90 HO or NHO
Two Section Speed Valve, Closing Speed 90-25
Latching Speed 25-0

BFS-833

BFS-833 attachment
For wooden & aluminium doors.



Available in Matte & Glossy Finish



BFS-67

Finish: Matte & Gloss
Material: Stainless Steel SS 304.

NON DIGGING NEW FLOOR HINGE

PERFORMANCE SPECIFICATION

- Max Open Degree 150°
- 90° HO or NHO
- Two section speed valve
- Closing speed 90°-10°
- Latching speed 10°-0°
- 100 Kg. weight capacity

PATCH FITTINGS

BPF-01 | BOTTOM PATCH

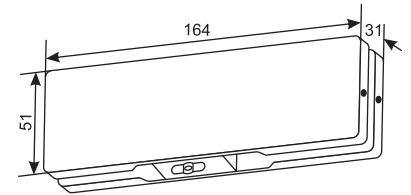


applications

Secure On To The Bottom Of The Door Leaf To Accept The Spindle Of BTX Floor Springs.

Specifications

- With SS 304 cover of 1mm thickness.
- Ensure that the cover is secure in its place.
- It is used for 8-10mm. glasses.
- Available in glossy & mat finish.
- Material: Stainless Steel SS 304.



20 PCS. SET

BPF-02 | TOP PATCH

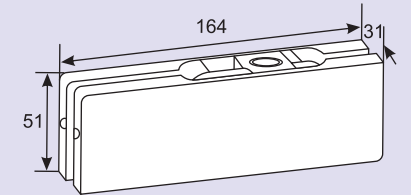


applications

Secure On To The Bottom Of The Door Leaf To Accept The Spindle Of BTX Floor Springs.

Specifications

- Variable Pivot Point Of 55 Or 65mm
- With SS 304 cover of 1mm thickness.
- Cover secured with L-Key.
- Ensure that the cover is secure in its place.
- It is used for 8-10mm. glasses.
- Available in SSS Finish.
- Material: Stainless Steel SS 304.



20 PCS. SET

BPF-04 | L CORNER PATCH

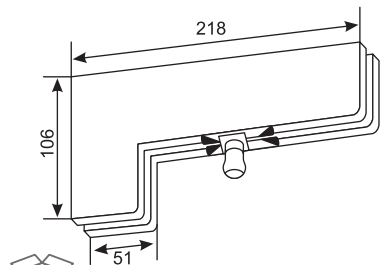


applications

Connects Over panel and slide panel with pivot.

Specifications

- Over Panel side panel connecting panel.
- With SS 304 cover of 1mm thickness.
- Cover secured with L-Key.
- Ensure that the cover is secure in its place.
- Pivot pin of 15mm diameter.
- Adjustable pivot point /55/65mm.
- It is used for 8-10mm. glasses.
- Available in SSS Finish.
- Material: Stainless Steel SS 304.



20 PCS. SET

BPF-05 | LOCK PATCH

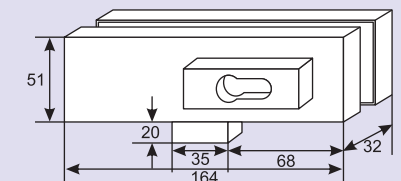


applications

To lock the double doors at bottom.

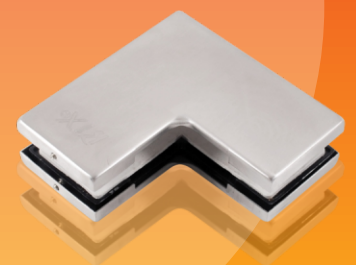
Specifications

- Centre patch lock and strike box,
- With a euro profile cylinder and strike box,
- Bolt projection of 15mm (single throw) four security keys.
- With SS 304 cover of 1mm thickness.
- Cover secured with L-Key.
- Ensure that the cover is secure in its place.
- It is used for 8-10mm. glasses.
- Available in SSS Finish.
- Material: Stainless Steel SS 304.



20 PCS. SET

BPF-09 | SMALL L PATCH

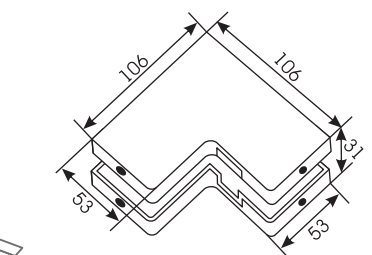


applications

Secure On To The Bottom Of The Door Leaf To Accept The Spindle Of Btx Floor Springs.

Specifications

- Over Panel side panel connecting panel.
- With SS 304 cover of 1mm thickness.
- Cover secured with L-Key.
- Ensure that the cover is secure in its place.
- It is used for 8-10mm. glasses.
- Available in SSS Finish.
- Material: Stainless Steel SS 304.



20 PCS. SET

BPF-14

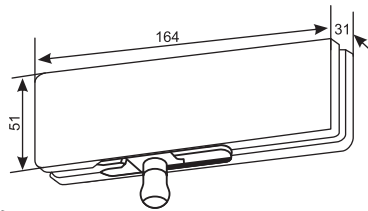
applications

To secure over panel with the wall with a pivot of 15mm diameter

Specifications

- ✓ With SS 304 cover of 1mm thickness.
- ✓ Cover secured with L-Key.
- ✓ Ensure that the cover is secure in its place.
- ✓ It is used for 8-10mm. glasses.
- ✓ Available in SSS Finish.
- ✓ Material: Stainless Steel SS 304.

TOP CORNER/OVAR PANEL PATCH



 20 PCS. SET



BPF-18

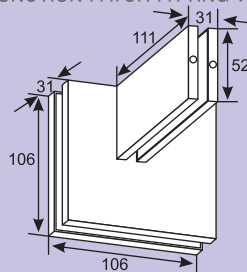
applications

Integrating four glasses and connecting with a fin.

Specifications

- ✓ Quadraple connector with fin.
- ✓ With SS 304 cover of 1mm thickness.
- ✓ Cover secured with L-Key.
- ✓ Ensure that the cover is secure in its place.
- ✓ It is used for 8-10mm. glasses.
- ✓ Available in SSS Finish.
- ✓ Material: Stainless Steel SS 304.

TOP JUNCTION PATCH FITTING WITH FIN



 20 PCS. SET



BPF-20

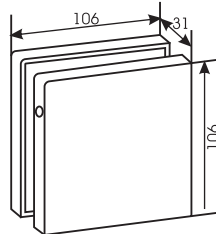
applications

For integrating a maximum of four numbers of fixed glasses.

Specifications

- ✓ Quadraple connector with fin.
- ✓ With SS 304 cover of 1mm thickness.
- ✓ Cover secured with L-Key.
- ✓ Ensure that the cover is secure in its place.
- ✓ It is used for 8-10mm. glasses.
- ✓ Available in SSS Finish.
- ✓ Material: Stainless Steel SS 304.

SINGLE PATCH



 20 PCS. SET



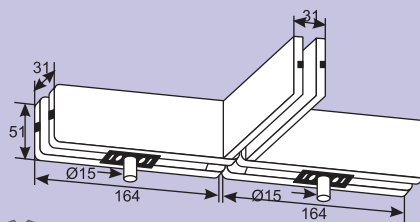
BPF-21

applications: For back to back doors with pivot pins. installed on to over panel.

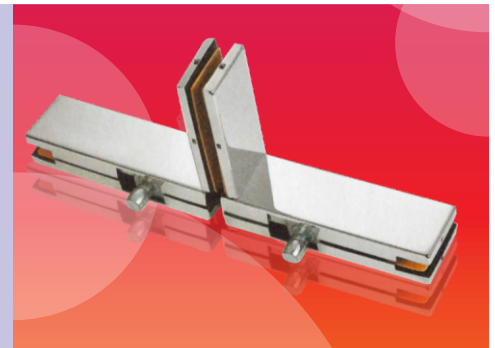
Specifications

- ✓ With pivot pin of 15mm diameter.
- ✓ Connecting fin with the over panel.
- ✓ With SS 304 cover of 1mm thickness.
- ✓ Cover secured with L-Key.
- ✓ Ensure that the cover is secure in its place.
- ✓ It is used for 8-10mm. glasses.
- ✓ Available in SSS Finish.
- ✓ Material: Stainless Steel SS 304.

DOUBLE OBER PANEL PATCH FITTING WITH FIN



 20 PCS. SET

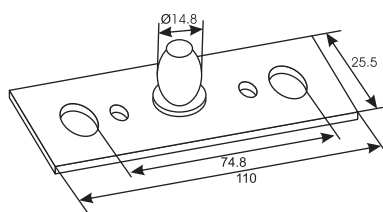


BPF-6606

Specifications

- ✓ Top pivot with 14.8mm
- ✓ With resistant.
- ✓ Suitable with top patch BPF-02
- ✓ Finish : SSS
- ✓ Material: Stainless Steel SS 304.

SMALL L PATCH



 50 PCS. SET



GLASS DOOR HANDLES

BDH-214

specification

Finish : Satin Stainless Steel (SSS)

Polish Stainless Steel (PSS)

*All sizes in mm



 20 PCS.

	Overall Length of Handle (A)	Centre to Centre Hole (B)	Diameter of Handle (C)	Hole Diameter for Glass
	325	--	25	12
PRODUCT CODE	213	400	305	32
	214	450	305	32
	216	600	450	32
	215	900	600	32
	217	1200	900	32
	1500	1200	32	12

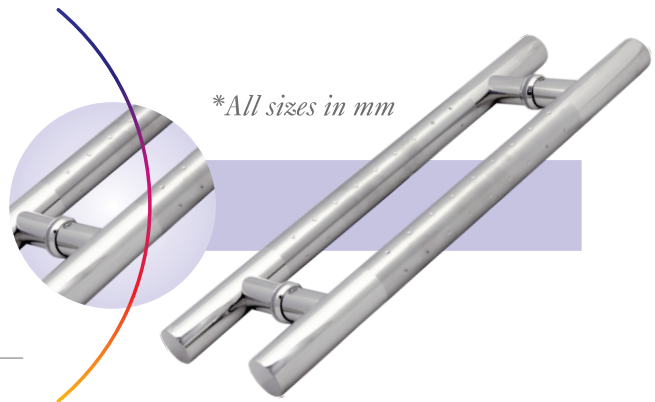
BDH-218

specification

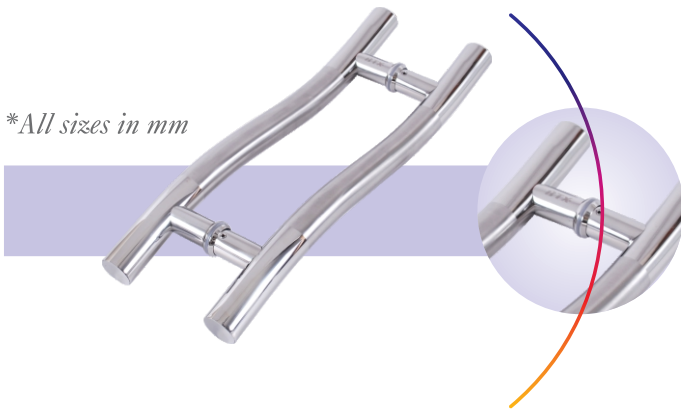
Finish : Satin Stainless Steel (DOTTED)

DOTTED H-HANDLE 32MM

Dia (CC-305MM; L-450 MM)



*All sizes in mm



*All sizes in mm

20 PCS. 

BDH-130

specification

Finish : Satin Stainless Steel (SSS)

Polish Stainless Steel (PSS)

Overall Length of Handle (A)	Centre to Centre Hole (B)	Diameter of Handle (C)	Hole Diameter for Glass
450	305	32	12

BDH-131

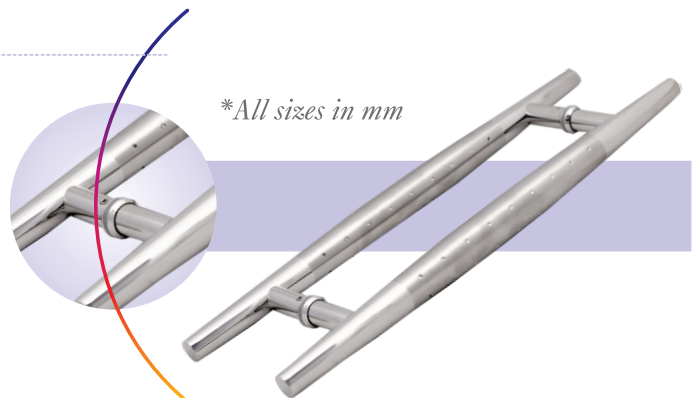
specification

Finish : Satin Stainless Steel (SSS)

Polish Stainless Steel (PSS)

 20 PCS.

Overall Length of Handle (A)	Centre to Centre Hole (B)	Diameter of Handle (C)	Hole Diameter for Glass
450	305	32	12



*All sizes in mm

GLASS DOOR HANDLES

BDH-200

**All sizes in mm*



BDH-228

**All sizes in mm*



BDH-250

**All sizes in mm
1200 (A) 900 (B)*



20 PCS.

Overall Length of Handle (A)	Centre to Centre Hole (B)	Diameter of Handle (C)	Hole Diameter for Glass
300	305	25	12

specification

Finish : Satin Stainless Steel (SSS)

Polish Stainless Steel (PSS)

Material : Stainless Steel

For Back To Back Installation.

With Gasket To Prevent Glass From Damage.



20 PCS.

Overall Length of Handle (A)	Centre to Centre Hole (B)	Diameter of Handle (C)	Hole Diameter for Glass
457	152	19	--

specification

Finish : Satin Stainless Steel (SSS)

Polish Stainless Steel (PSS)

Material : Stainless Steel

For Back To Back Installation.

With Gasket To Prevent Glass From Damage.



20 PCS.

Overall Length of Handle (A)	Centre to Centre Hole (B)	Diameter of Handle (C)	Hole Diameter for Glass
1400	900	--	12

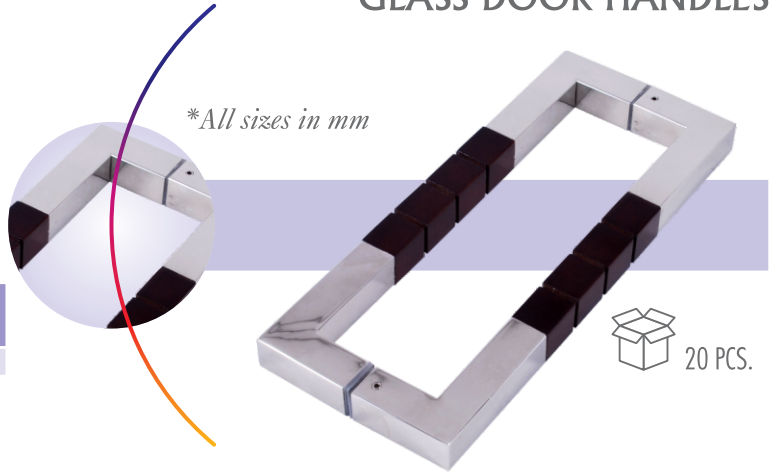
GLASS DOOR HANDLES

BDH-121

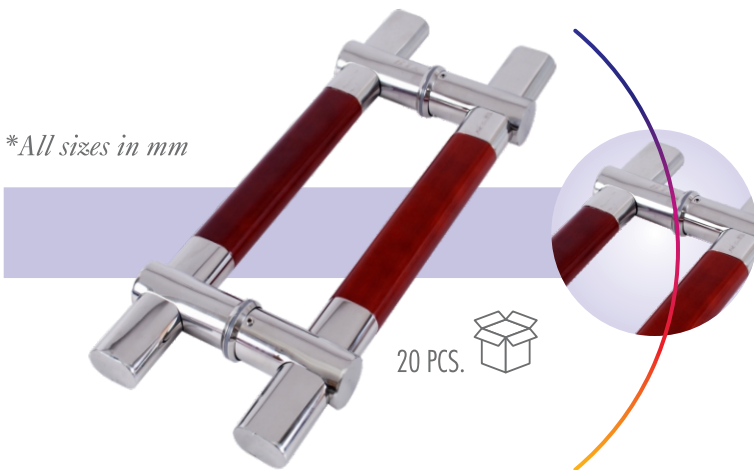
specification

Finish : Satin Stainless Steel (SSS)
 Wood/polish Stainless Steel (TW/PSS)
 Material : Wood/stainless Steel

Overall Length of Handle (A)	Centre to Centre Hole (B)	Diameter of Handle (C)	Hole Diameter for Glass
300	305	25	12



*All sizes in mm



BDH-120

specification

Finish : Satin Stainless Steel (SSS)
 Polish Stainless Steel (PSS)
 Material : Stainless Steel

Overall Length of Handle (A)	Centre to Centre Hole (B)	Diameter of Handle (C)	Hole Diameter for Glass
450	305	25/32	12

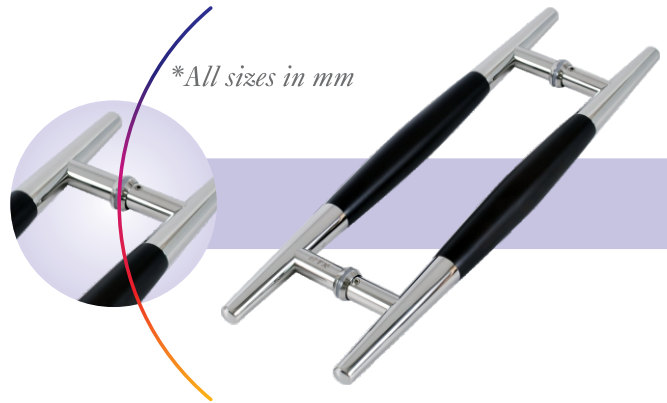
BDH-122

specification

Finish : Satin Stainless Steel (SSS)
 Wood/polish Stainless Steel (TW/PSS)

20 PCS.

Overall Length of Handle (A)	Centre to Centre Hole (B)	Diameter of Handle (C)	Hole Diameter for Glass
450	305	32	12



BDH-500

specification

Finish : Satin Stainless Steel (SSS)
 Polish Stainless Steel (PSS)
 Material : Stainless Steel

1 PCS.

Overall Length of Handle (A)	Centre to Centre Hole (B)	Diameter of Handle (C)	Hole Diameter for Glass
600	450	32	12



GLASS DOOR LOCKS

BDL-128A



specification :

*Finsih : Stain stainless steel (SSS)
Suitable for 10\12mm glass.
Suitable for glass to glass
Lock requires no cutout in glass*



Double side door lock
(One side key One side Knob)

BDL-128B



specification :

*Finsih : Stain stainless steel (SSS)
Suitable for 10\12mm glass.
Suitable for glass wallfix structure
Lock requires no cutout in glass*



Single side door lock
(One side key One side Knob)

BDL-118A



specification :

*Finsih : Stain stainless steel (SSS)
Suitable for 10\12mm glass.
Suitable for glass to glass
Lock requires no cutout in glass*



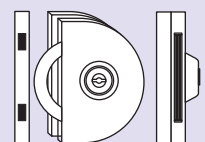
Double side door lock
(One side key only)

BDL-118B



specification :

*Finsih : Stain stainless steel (SSS)
Suitable for 10\12mm glass.
Suitable for glass wallfix structure
Lock requires no cutout in glass*



Single side door lock
(One side key only)

BDL-138B



specification :

*Finsih : Stain stainless steel (SSS)
Suitable for 10\12mm glass.
Suitable for glass to glass
Lock requires no cutout in glass*



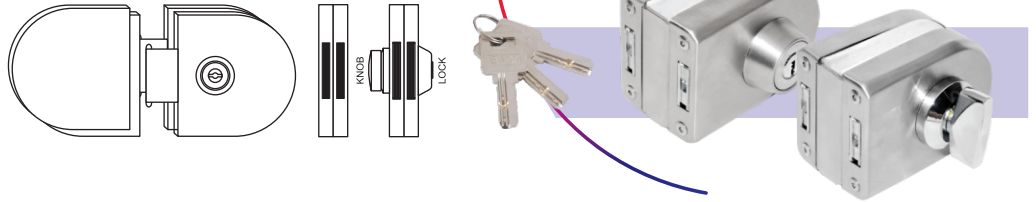
Double side door lock
(Boath side Key)

GLASS DOOR LOCKS

BDL-126A

specification :

*Finsih : Stain stainless steel (SSS)
Suitable for 10\12mm glass.
Suitable for glass to glass
Lock requires no cutout in glass*

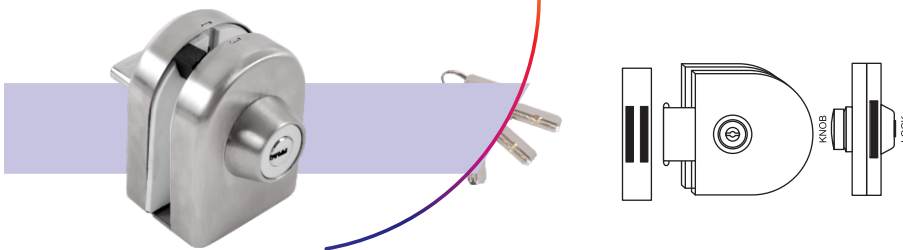


 20 PCS. SET

BDL-126B

specification :

*Finsih : Stain stainless steel (SSS)
Suitable for 10\12mm glass.
Suitable for glass wall/fix structure
Lock requires no cutout in glass*



30 PCS. SET 

BDL-116A

specification :

*Finsih : Stain stainless steel (SSS)
Suitable for 10\12mm glass.
Suitable for glass to glass
Lock requires no cutout in glass*

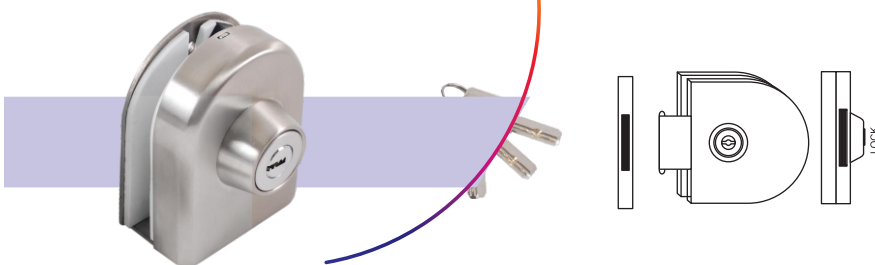


 20 PCS. SET

BDL-116B

specification :

*Finsih : Stain stainless steel (SSS)
Suitable for 10\12mm glass.
Suitable for glass wall/fix structure
Lock requires no cutout in glass*

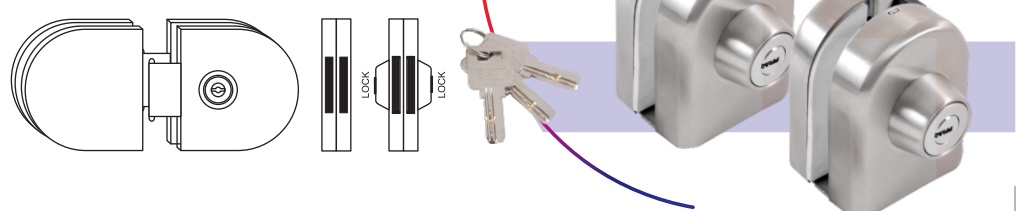


30 PCS. SET 

BDL-136A

specification :

*Finsih : Stain stainless steel (SSS)
Suitable for 10\12mm glass.
Suitable for glass to glass
Lock requires no cutout in glass*

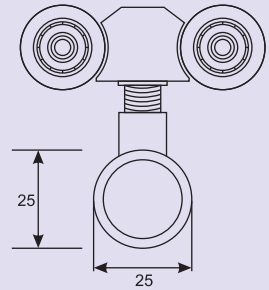


 20 PCS. SET

BDF-5005

Specifications:
 Roller for glass door.
 Heavy duty sliding door roller
 Suitable for 60Kg. door weight per pair.
 Metal body with PVC wheel
 Material used: Stainless Steel
 Finish: SSS

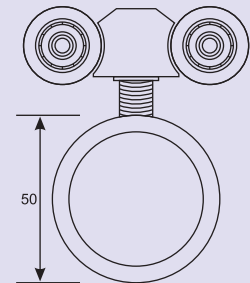
SLIDING DOOR ROLLER



BDF-5007

Specifications:
 Roller assembly.
 Heavy duty sliding door roller
 Suitable for 80Kg. door weight per pair.
 Suitable for 10mm to 12mm glass.
 Metal body with PVC wheel
 Material used: Stainless Steel
 Finish: SSS

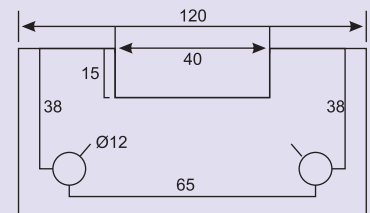
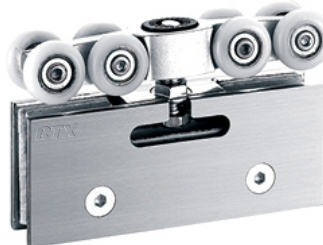
SLIDING DOOR ROLLER



BDF-5002

Specifications:
 Heavy duty sliding door roller
 Suitable for 100Kg. door weight per pair.
 Suitable for 10mm to 12mm glass.
 Metal body with PVC wheel
 Material used: Stainless Steel
 Finish: SSS

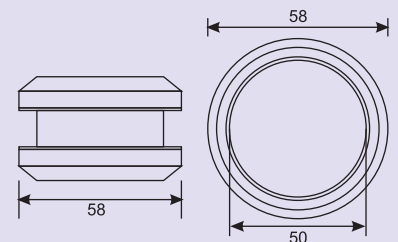
SLIDING DOOR ROLLER



BSG-A01-7

Specifications:
 Good smooth finish.
 Glass hole dia 50mm.
 Material used: Stainless Steel
 Finish: SSS

SLIDING DOOR HANDLE

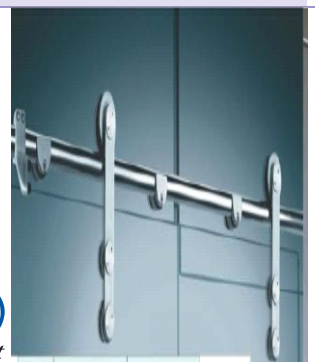


SLIDING SETS



BSG-A01-1(M)

Shower Sliding Set



BDF-5008(S)

Office Sliding Set

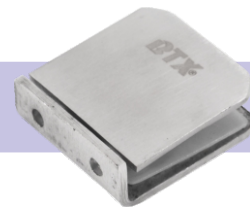
GLASS CLAMPS

BGC-511(S)



0 Fixed Glass Clamp

BGC-511(M)



0 Fixed Glass Clamp

BGC-512(S)



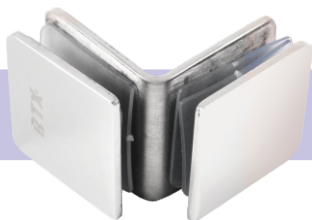
90 Single Fixed Glass Clamp

BGC-512(M)



90 Single Fixed Glass Clamp

BGC-513(S)



90 Double Fixed Glass Clamp

BGC-513(M)



90 Double Fixed Glass Clamp

BGC-517(S)



180 Double Fixed Glass Clamp

BGC-517(M)



180 Double Fixed Glass Clamp

BSH-522

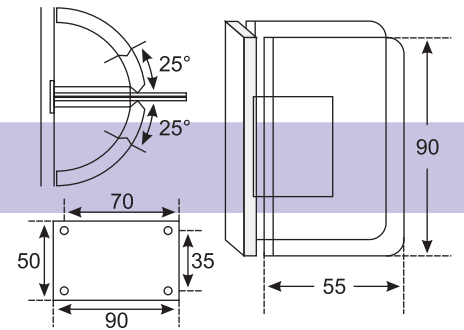


specification :

Wall to glass hinge

Material : (M)-1SS304 (Z)-Zinc

90° DOUBLE SIDE SHOWER HINGE



BSH-524

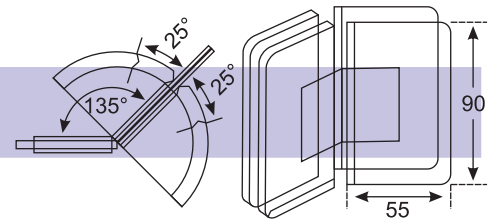


specification :

Glass to glass hinge 135

Material : (M)-1SS304 (Z)-Zinc

135° SHOWER HINGE



BSH-525

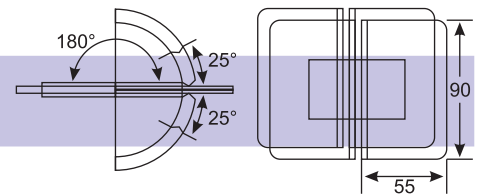


specification :

Glass to glass hinge 180

Material : (M)-1SS304 (Z)-Zinc

180° SHOWER HINGE



BSH-526

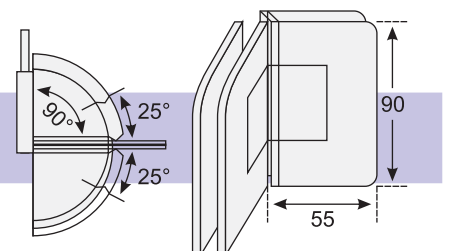


specification :

Glass to glass hinge 90

Material : (M)-1SS304 (Z)-Zinc

90° DOUBLE SIDE SHOWER HINGE



GLASS HEADERS

BDF-SB-01



Shower bracket wall clamp
Material : Brass

BDF-SB-02



Shower bracket support clamp
Material : Brass

BDF-SB-03



Shower bracket end clamp
Material : Brass

BDF-SB-04



Shower bracket clamp
(Two Way Connecting Rod)
Material : Brass

BDF-SB-05



Shower bracket clamp
(Three Way Connecting Rod)
Material : Brass

BLUSTER RAILING

BDF-BL-01



RAILING PILLER MATT FINISH
SIZE : 4", 6" & 9"

BDF-BL-02



RAILING PILLER MATT FINISH
SIZE : 6" & 9"

BDF-BL-03



RAILING SUPPORT CLAMP

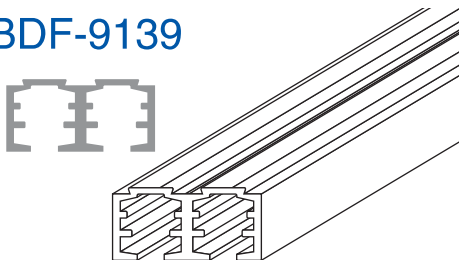
BDF-BL-04



RAILING STUD

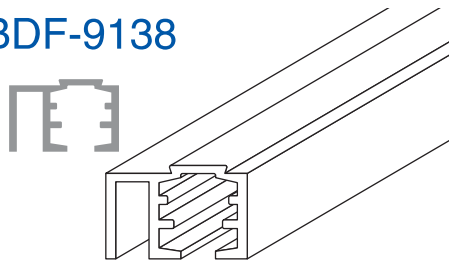
PROFILES

BDF-9139



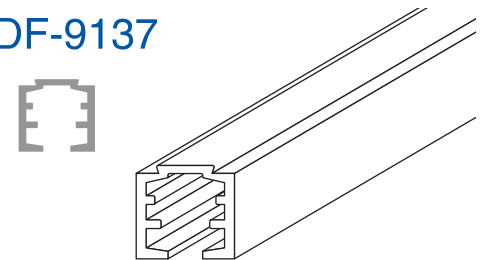
SLIDING TRACK
LENGTH : 10FT. & 13FT.

BDF-9138



SLIDING TRACK
LENGTH : 10FT. & 13FT.

BDF-9137

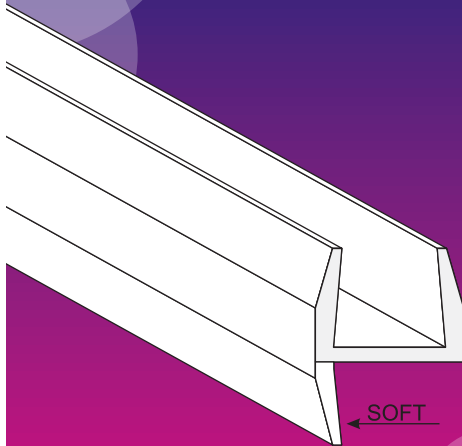


SLIDING TRACK
LENGTH : 10FT. & 13FT.

GLASS SEALING PROFILE

BDL-GP-01

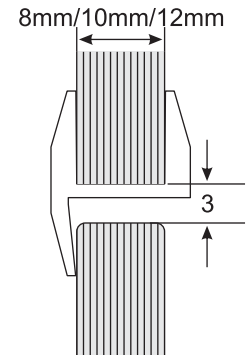
*All sizes in mm



SOFT

specification

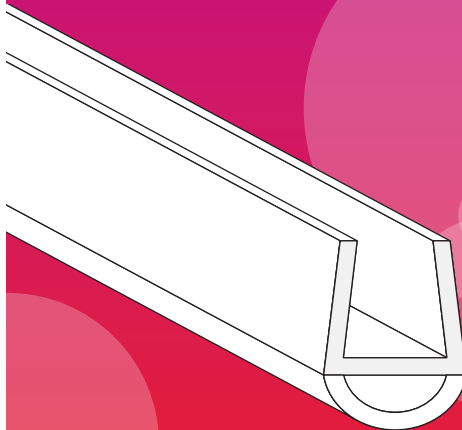
Central 180° Weather Seal
It used between fix panel &
Door Panel
Seal acts also as door stop.
Suitable product for
8, 10 and 12mm Glass.



20 PCS. SET

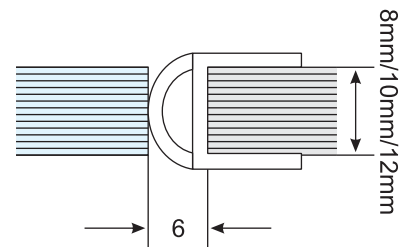
BDL-GP-03

*All sizes in mm



specification

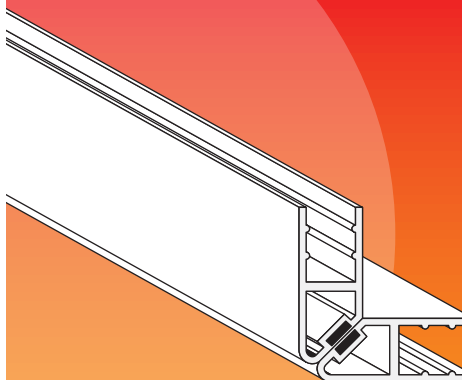
Central 180° Weather Seal
Suitable product for
8, 10 and 12mm Glass.



20 PCS. SET

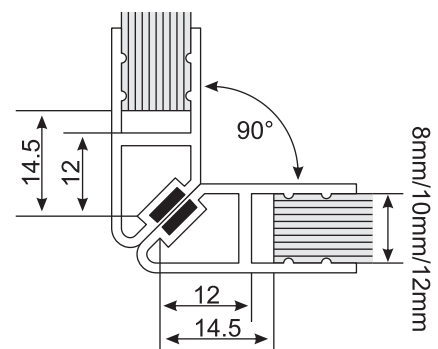
BDL-GP-07

*All sizes in mm



specification

Magnetic Seal for 90°
Connection transparent.
Separate product for
8, 10 and 12mm Glass.
Supplied in Paris.

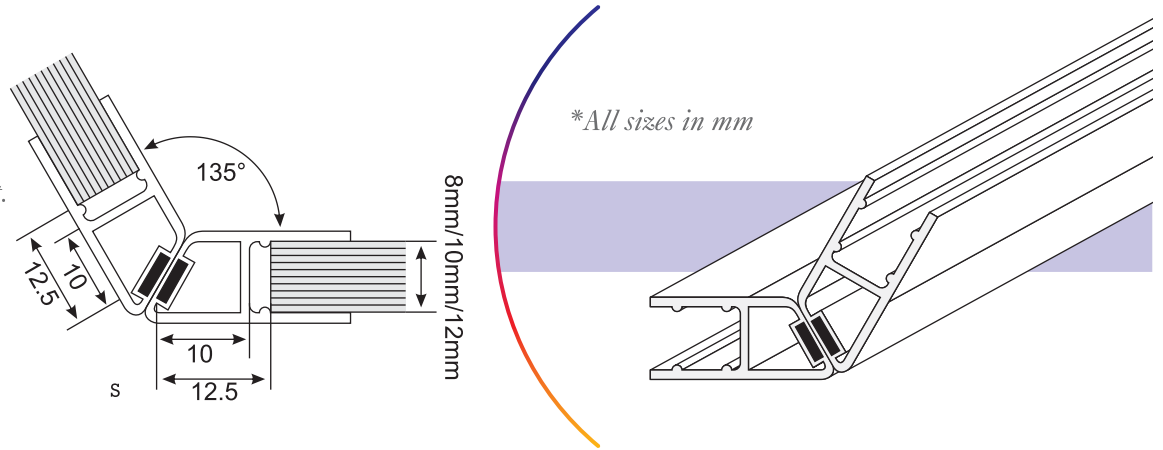


20 PCS. SET

GLASS SEALING PROFILE

BDL-GP-08

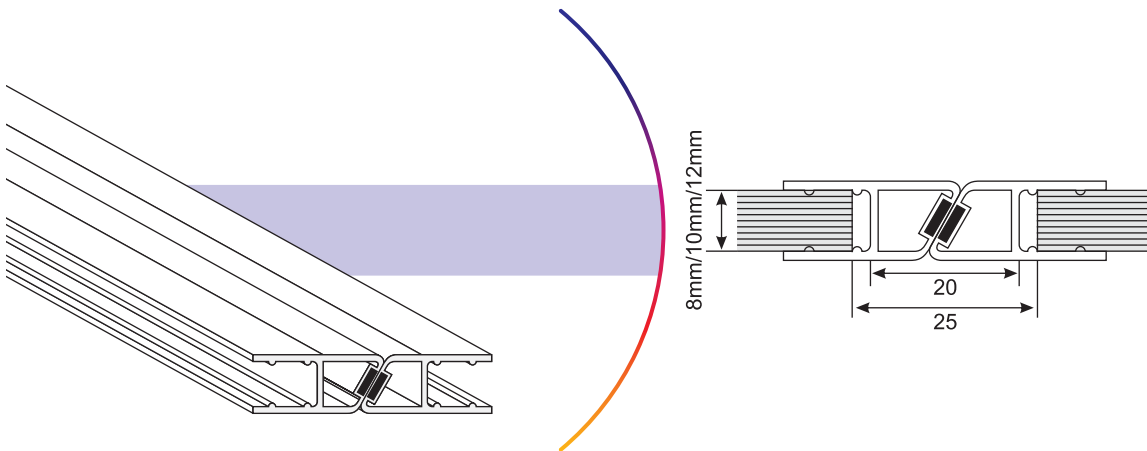
specification
 Magnetic Seal for 90°
 Connection transparent.
 Separate product for
 8, 10mm Glass.
 Supplied in Paris.



 10 PCS. SET

BDL-GP-09

**All sizes in mm*

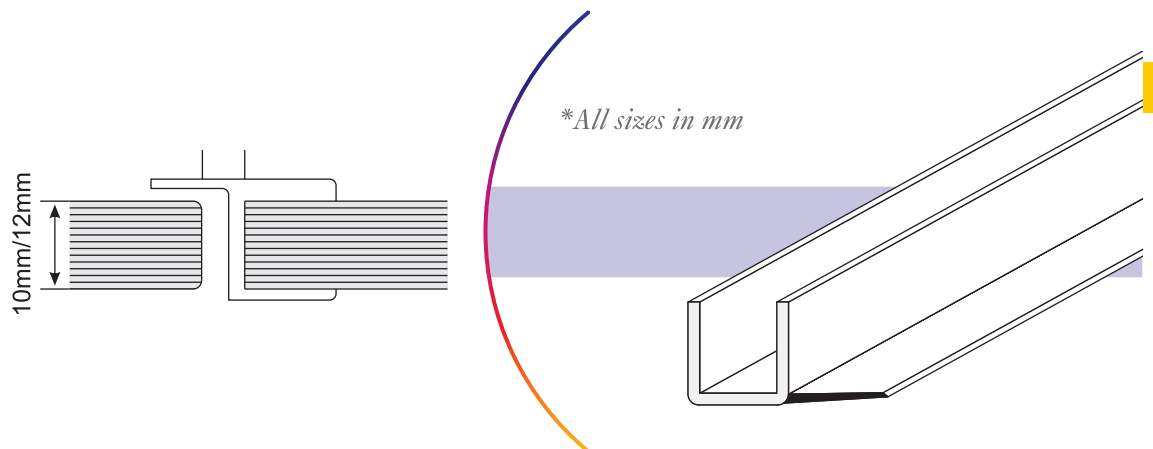


specification
 Magnetic Seal for 90°
 Connection transparent.
 Separate product
 for 8, 10mm Glass.
 Supplied in Paris.

BDL-GP-10

10 PCS. SET 

specification
 Sliding Seals
 For 10mm to 12mm



 10 PCS. SET

COMPLETE GLASS, WOODEN & KITCHEN HARDWARE SOLUTIONS



Advanced Technologies (India)

 PLOT NO. C-261-B, PHASE-VIII, FOCAL POINT, LUDHIANA. (PB.) INDIA.

 +91 161 2920210  +91 94655 37267

 sales@btxhardware.co.in | www.btxhardware.co.in